



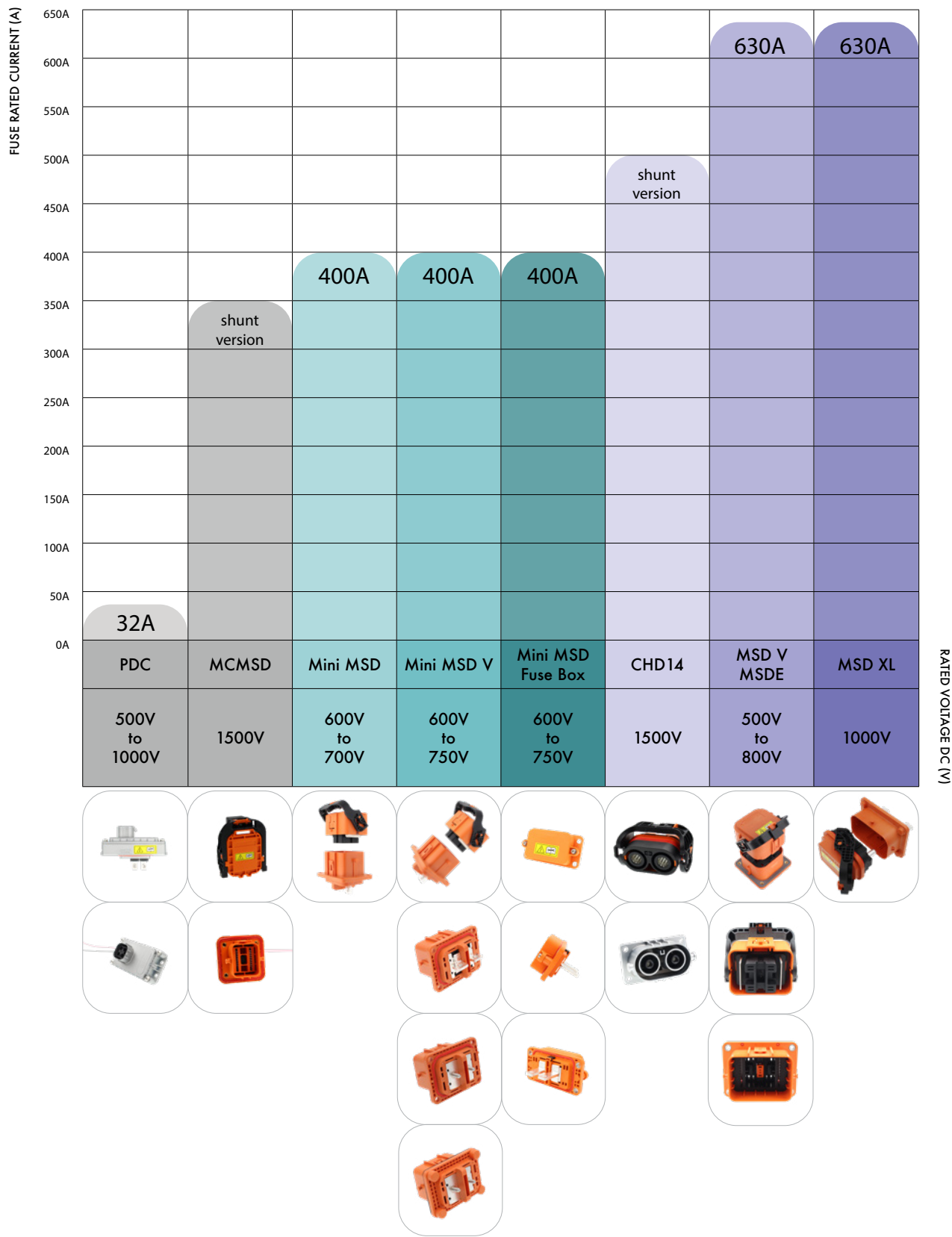
EXCEL | MATE MSD

Manual Service Disconnect

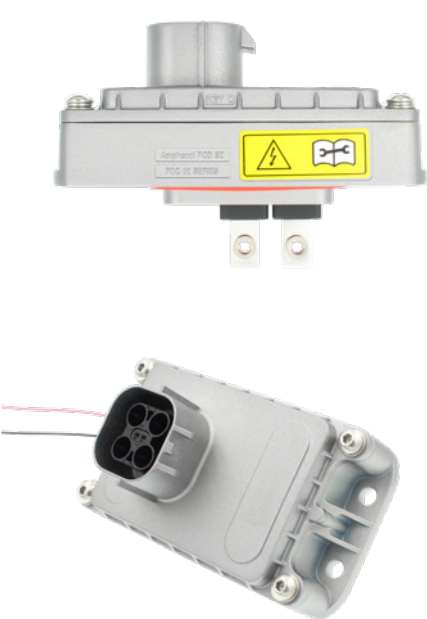
CONTENTS

| | |
|--|----|
| PDC | 3 |
| PRODUCT DIMENSIONS | 4 |
| HOW TO ORDER PDC | 7 |
| MCMSD | 8 |
| PRODUCT DIMENSIONS | 9 |
| MINI MSD | 10 |
| PRODUCT DIMENSIONS | 11 |
| HOW TO ORDER MINI MSD | 13 |
| MSDE | 14 |
| PRODUCT DIMENSIONS & HOW TO ORDER MSDE | 15 |
| MINI MSD V | 16 |
| HOW TO ORDER MINI MSD V | 17 |
| MINI MSD FUSE BOX | 18 |
| PRODUCT DIMENSIONS | 19 |
| HOW TO ORDER MINI MSD FUSE BOX | 20 |
| MSD | 21 |
| PRODUCT DIMENSIONS | 22 |
| HOW TO ORDER MSD | 24 |
| MSD V | 25 |
| HOW TO ORDER MSD V | 26 |
| MSD XL | 27 |
| PRODUCT DIMENSIONS | 28 |
| HOW TO ORDER MSD XL | 31 |
| CHD SERIES - CHD14 2-PIN SHUNT | 32 |

EXCEL|MATE MSD



EXCEL|MATE PDC - TECHNICAL CHARACTERISTICS



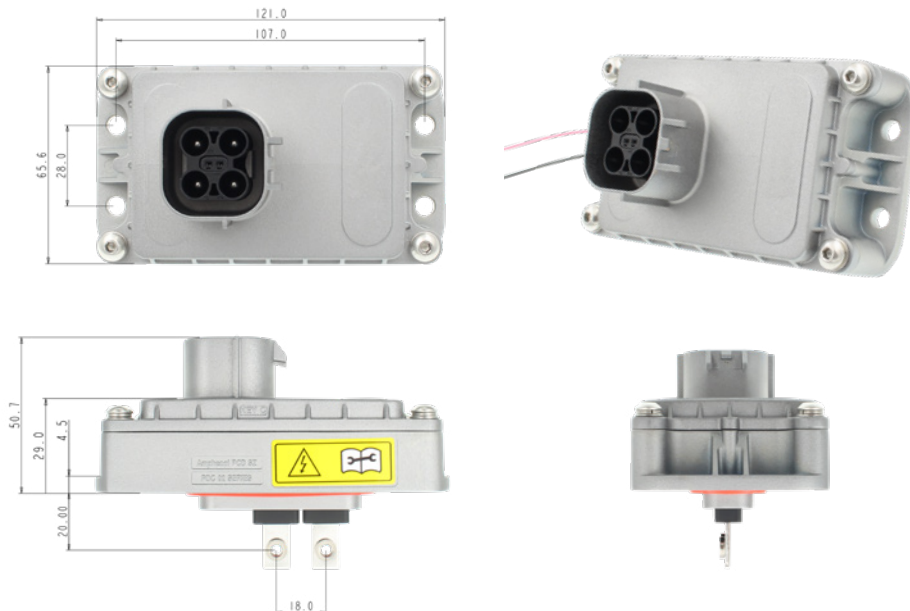
KEY FEATURE

Waterproof (unmated socket): IP67

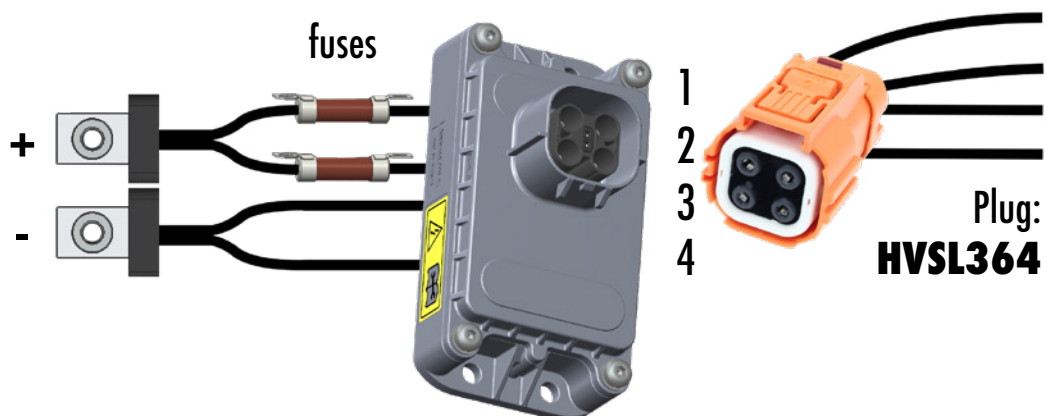
| DESCRIPTION | |
|--|--|
| This Power Distribution Connector (PDC) finds its best use in the case where the PDU is already fully integrated into the Battery Pack. Without a PDC, we would need to entirely disassemble the Battery Pack to replace a blown fuse. However, using a PDC with removable fuses makes the replacement of blown fuses much more accessible and effortless. | |
| ELECTRICAL | |
| Fuse: | 15A, 20A, 25A, 30A, 35A, 40A, 50A, 60A |
| Rated current: | 8A to 32A |
| Rated voltage: | 500V, 750V, 1000V |
| Wire range: | 2.5, 4, and 6 mm ² |
| ENVIRONMENTAL | |
| Ambient temperature: | 40 to 70°C |
| Waterproof (mated): | IP67, IP6K9K |
| Waterproof (unmated socket): | IP67 |
| MATERIAL | |
| Housing: | Metallic |



BATTERY PACK TO MAIN POWER DISTRIBUTION UNIT – HIGH POWER AUXILIARIES



The PDC connector converts a **2-pin input** into a **4-pin output**.



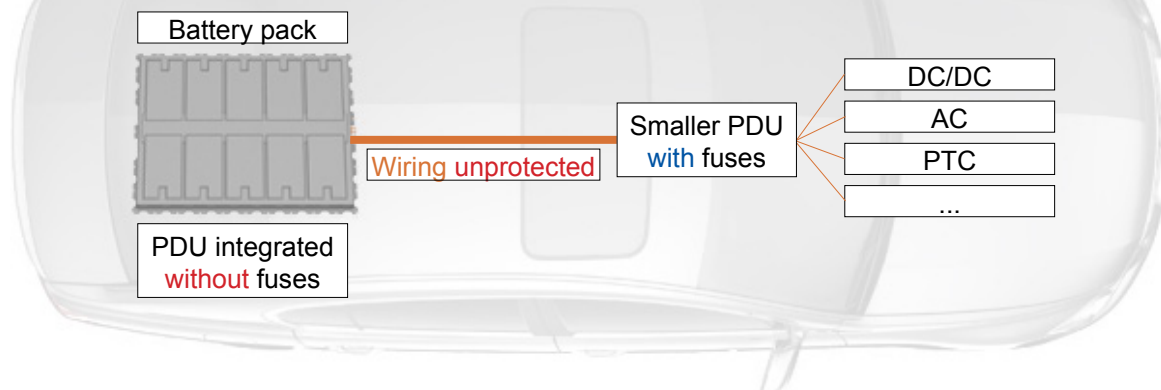
Basically, the PDC is a mini PDU-like type of connector!

Basic structure



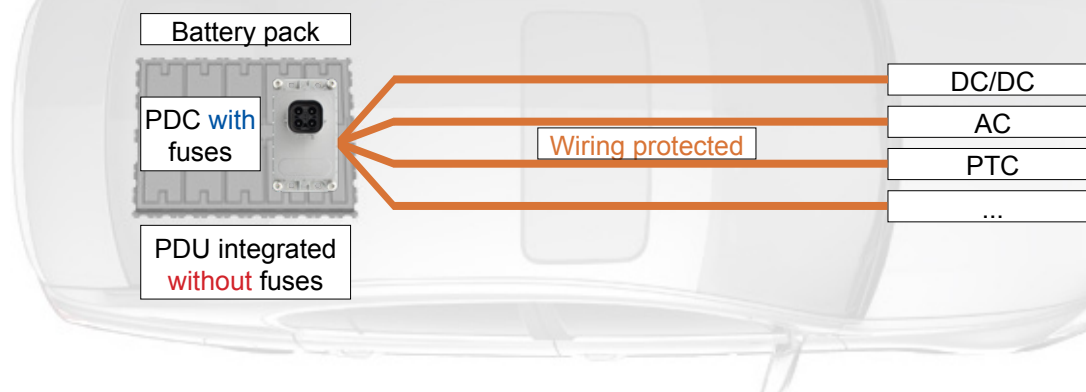
This structure **safely** secures the wiring, but once a fuse blows, its replacement requires a **complex** disassembly of the whole battery pack.

Workaround structure



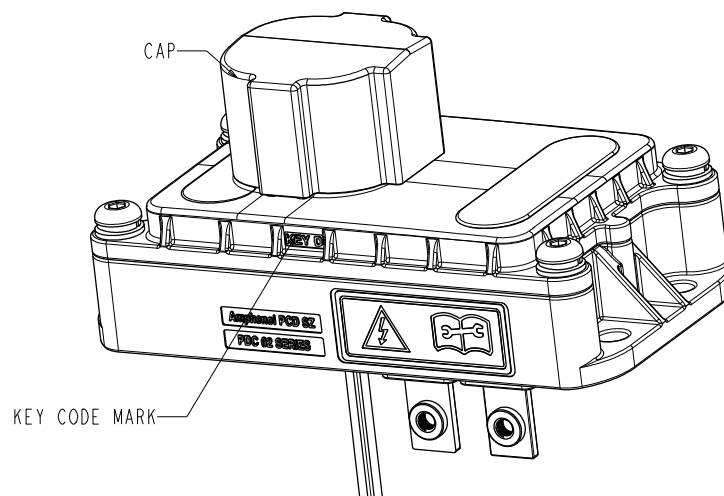
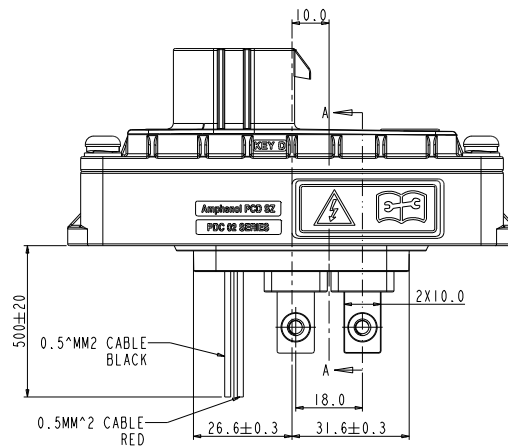
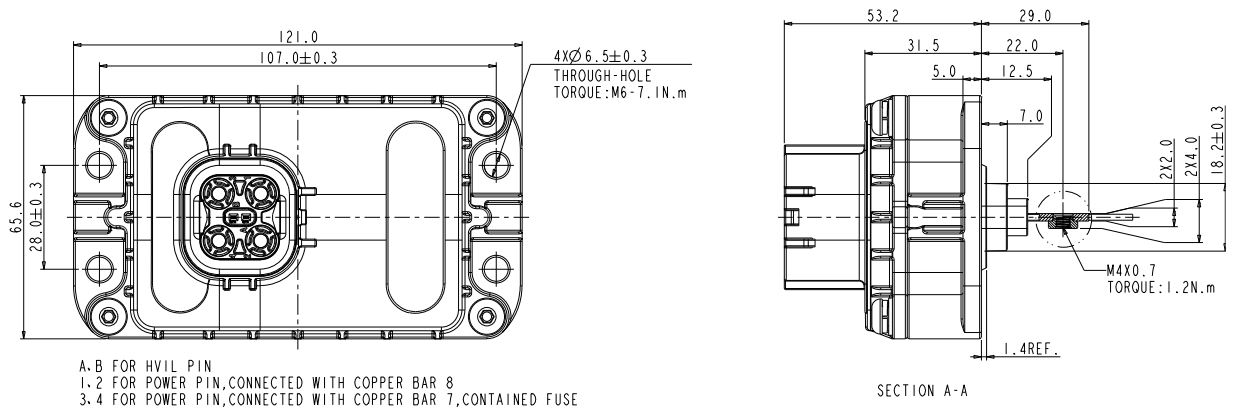
This workaround structure allows for an **easier** replacement of the fuses, which are placed in an external additional PDU. However, the wiring between the battery pack and this added PDU is **unprotected**.

Optimized structure



By adding a PDC connector to the battery pack, this optimized structure benefits from both a successfully protected wiring as well as an easy and effortless replacement of its fuses.

PRODUCT DIMENSIONS



HOW TO ORDER - EXCEL|MATE PDC

| | | | | | | | |
|--------|---|---|---|---|---|---|----|
| PDC 02 | 1 | 0 | 1 | S | 0 | 0 | 01 |
|--------|---|---|---|---|---|---|----|

Key:
1: Matched HVSL 364 Key C
2: Matched HVSL 364 Key D

HVIL:
0: Without HVIL
1: With HVIL

Voltage:
1: 1000V DC
2: 750V DC
3: 500V DC

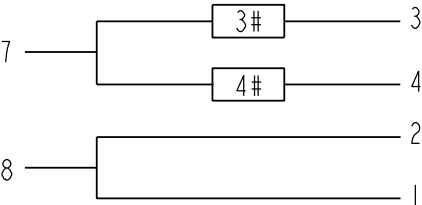
Fuse brand:
S: Sinofuse
B: Bussmann

Fuse at position #3:
0: Busbar 6: 15A
1: 30A 7: 20A
2: 35A 8: 25A
3: 40A
4: 50A
5: 60A

Fuse at position #4:
0: Busbar 6: 15A
1: 30A 7: 20A
2: 35A 8: 25A
3: 40A
4: 50A
5: 60A

Nut direction:
01: M4 nut, located below copper bar
02: M4 nut, located above copper bar

- Remarks:
- 1. When a single fuse is loaded, the other hole can be loaded with copper bars.
 - 2. When two fuses are loaded, the same brand of fuses shall be selected.



| BRAND OPTIONAL FUSE SPECIFICATION SHEET: | | |
|--|----------|----------|
| RATING VOLTAGE | SINOFUSE | BUSSMANN |
| 1000V | 30A | 35A |
| | 40A | 40A |
| | 50A | 50A |
| 750V | 15A | 15A |
| | 20A | 20A |
| | 25A | 25A |
| | 30A | 30A |
| | 40A | 40A |
| | 50A | 50A |
| | N/A | 60A |
| 500V | N/A | 15A |
| | | 20A |
| | | 25A |
| | | 30A |
| | | 40A |
| | | 50A |
| | | 60A |

POSITIONS 3# AND 4# CAN CARRY BUS BAR OR FUSES

PDC CIRCUIT DIAGRAM

EXCEL|MATE MCMSD - TECHNICAL CHARACTERISTICS



KEY FEATURE

IP2XB (Socket): Yes

| DESCRIPTION | |
|---|--------------------------------|
| MCMSD is an Electric Vehicle-friendly connector that has been mainly designed for Energy Storage. | |
| MECHANICAL | |
| Mating cycles | ≥ 50 cycles |
| ELECTRICAL | |
| Rated current: | 350A@ ambient temperature 70°C |
| Rated voltage: | 1500V (DC) |
| Insulation resistance: | 200 MΩ Min |
| Dielectric withstanding voltage: | 4000V AC |
| ENVIRONMENTAL | |
| Ambient temperature: | -40 to 70°C |
| Operating temperature: | -40 to 125°C |
| Waterproof (mated): | IP67, IP6K9K |
| Touch-proof: | IP2XB |
| STANDARDS | |
| RoHS | |



Receptacle's **cap**

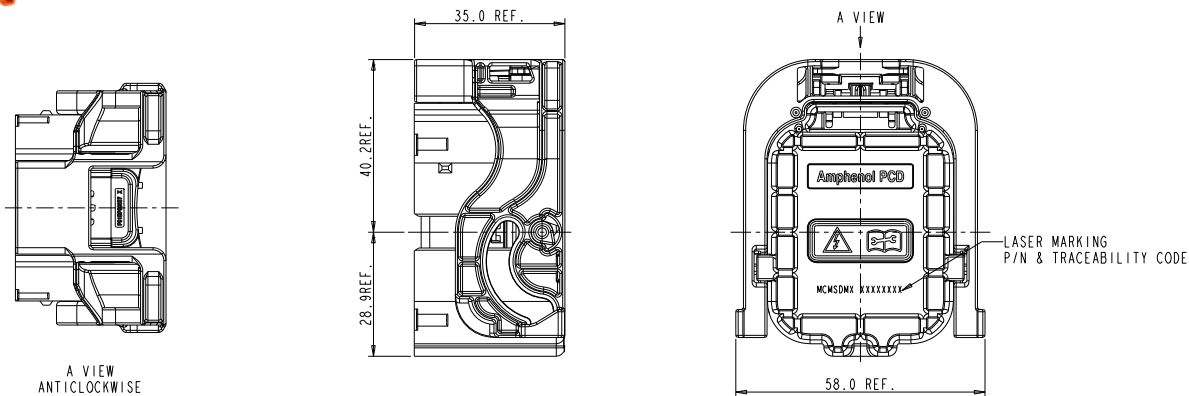
PRODUCT DIMENSIONS

PLUG

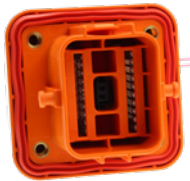


| | | |
|-------|---|---|
| MCMSD | M | X |
|-------|---|---|

HVIL code
0: without HVIL
1: with HVIL



RECEPTACLE

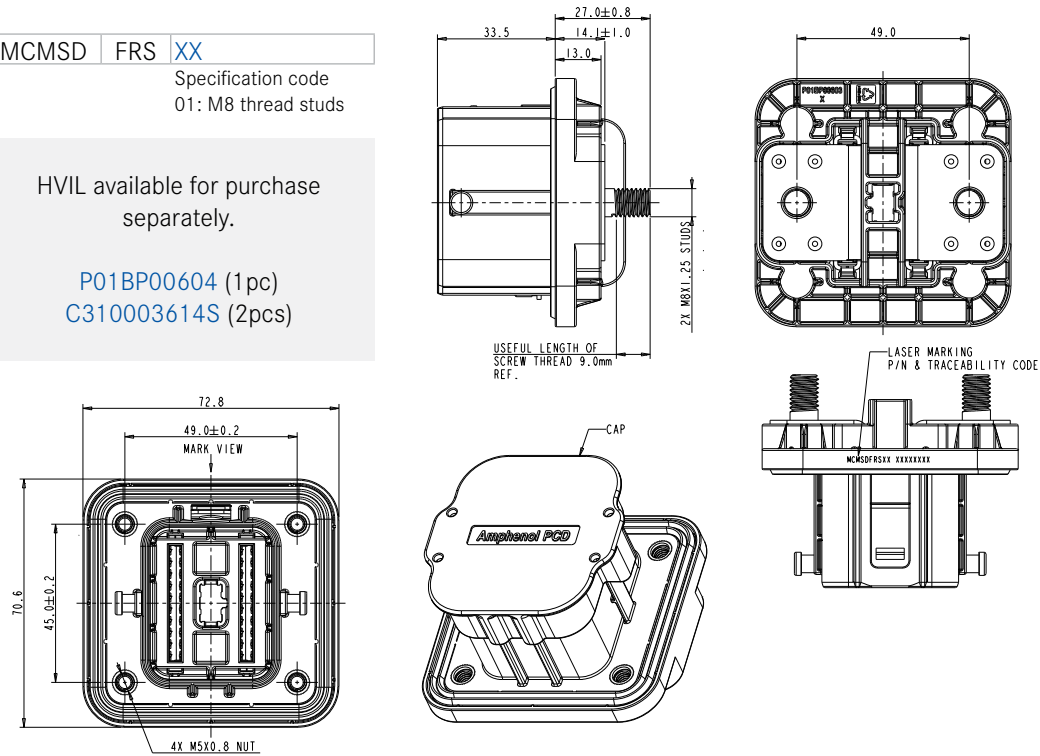


| | | |
|-------|-----|----|
| MCMSD | FRS | XX |
|-------|-----|----|

Specification code
01: M8 thread studs

HVIL available for purchase separately.

P01BP00604 (1pc)
C310003614S (2pcs)



EXCEL|MATE MINI MSD - TECHNICAL CHARACTERISTICS



KEY FEATURES

A two-stage lever provides an HVIL time delay

1 x integrated internal HVIL

Unique cooling structure

Dual-channel design lowers temperature rise

No tools required to unmate

Various fuse ratings

Receptacle can be front or rear mounted

APPLICATION

It is a tool-free solution for disconnecting the internal high voltage battery pack and protecting it from short circuit.

MECHANICAL

| | |
|---------------|-------------|
| Mating cycles | ≥ 50 cycles |
|---------------|-------------|

ELECTRICAL

| | |
|--------------------|------------|
| Fuse specification | up to 400A |
|--------------------|------------|

With fuse:

| | |
|---------------|---|
| Rated current | Current is approximately 1/3 the fuse rating (170A Max) |
|---------------|---|

| | |
|---------------|-----------------|
| Rated voltage | 600V to 700V DC |
|---------------|-----------------|

With shunt:

| | |
|---------------|----------|
| Rated current | 170A Max |
|---------------|----------|

| | |
|---------------|--------------|
| Rated voltage | 1500V DC Max |
|---------------|--------------|

ENVIRONMENTAL

| | |
|-------------------|----------------------|
| Protection degree | IP67, IP6K9K (mated) |
|-------------------|----------------------|

| | |
|---------------------|---------------|
| Ambient temperature | -40°C to 70°C |
|---------------------|---------------|

| | |
|---------------------|---------------|
| Storage temperature | -40°C to 85°C |
|---------------------|---------------|

| | |
|-----------------------|----------------|
| Operating temperature | -40°C to 125°C |
|-----------------------|----------------|

| | |
|--------------|--------|
| Flammability | UL94V0 |
|--------------|--------|

STANDARDS

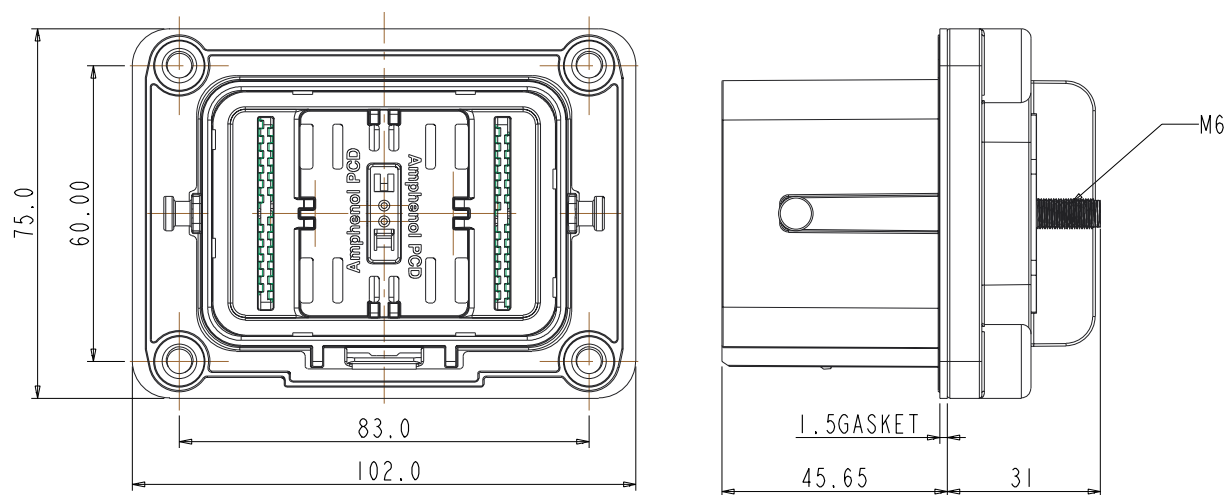
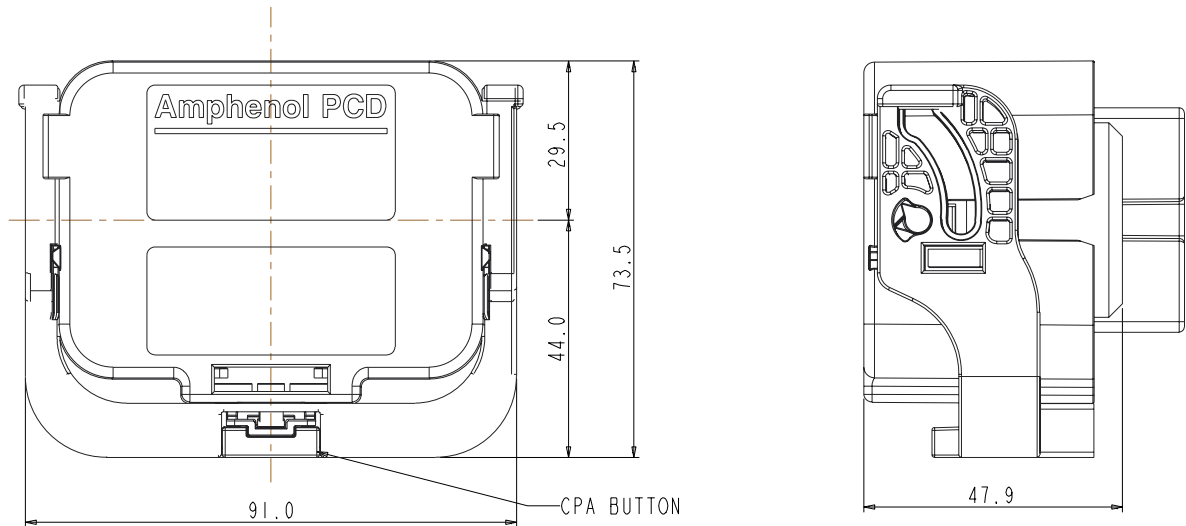
| |
|---------|
| USCAR-2 |
|---------|

| |
|----------|
| USCAR-37 |
|----------|

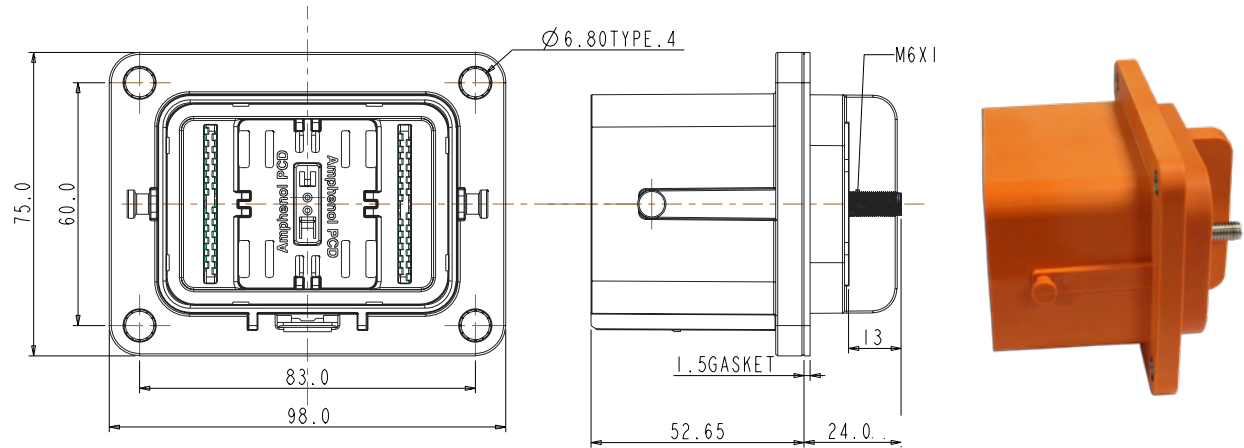
| |
|--------|
| LV-215 |
|--------|

| |
|------|
| RoHS |
|------|

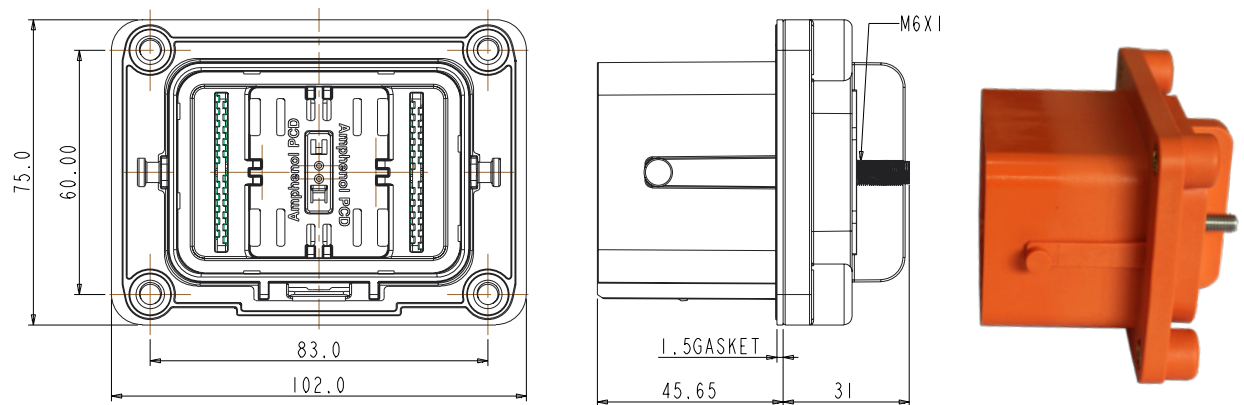
PRODUCT DIMENSIONS



FRONT MOUNTED



REAR MOUNTED



DUST CAP AVAILABLE:
P/N: C270006809

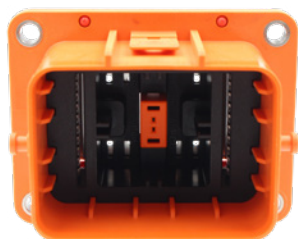


Plug

| | | | |
|---|----------|---|-----|
| | MINI MSD | M | 200 |
| Shell type: | | | |
| M: Plug | | | |
| Fuse rating current: | | | |
| 080: 80A | | | |
| 100: 100A | | | |
| 125: 125A | | | |
| 160: 160A | | | |
| 200: 200A | | | |
| 250: 250A | | | |
| 315: 315A | | | |
| 350: 350A | | | |
| 400: 400A | | | |
| 000: No fuse needed, can directly use the terminal | | | |
| Fuse brand : | | | |
| Bussmann (by default), other brands, please contact us. | | | |

Receptacle

| | | | | |
|--|----------|---|-----|---|
| | MINI MSD | F | 000 | F |
| Shell type: | | | | |
| F: Receptacle | | | | |
| Fuse rating current: | | | | |
| 000: No fuse needed, can directly use the terminal | | | | |
| Flange mounted type : | | | | |
| F: Front mounted | | | | |
| R: Rear mounted | | | | |



KEY FEATURES

A two-stage lever provides an HVIL time delay

1 x integrated internal HVIL

Unique cooling structure

Dual-channel design lowers temperature rise

No tools required to unmate

Various fuse ratings

Receptacle can be front or rear mounted

APPLICATION

It is a tool-free solution for disconnecting the internal high voltage battery pack and protecting it from short circuit.

MECHANICAL

| | |
|---------------|-------------|
| Mating cycles | ≥ 50 cycles |
|---------------|-------------|

ELECTRICAL

| | |
|--------------------|------------|
| Fuse specification | up to 630A |
|--------------------|------------|

With fuse:

| | |
|---------------|---|
| Rated current | Current is approximately 1/3 the fuse rating (170A Max) |
|---------------|---|

| | |
|---------------|---------|
| Rated voltage | 500V DC |
|---------------|---------|

With shunt:

| | |
|---------------|----------|
| Rated current | 350A Max |
|---------------|----------|

| | |
|---------------|-------------|
| Rated voltage | 500V DC Max |
|---------------|-------------|

ENVIRONMENTAL

| | |
|-------------------|----------------------|
| Protection degree | IP67, IP6K9K (mated) |
|-------------------|----------------------|

| | |
|---------------------|---------------|
| Ambient temperature | -40°C to 70°C |
|---------------------|---------------|

| | |
|---------------------|---------------|
| Storage temperature | -40°C to 85°C |
|---------------------|---------------|

| | |
|-----------------------|----------------|
| Operating temperature | -40°C to 125°C |
|-----------------------|----------------|

| | |
|--------------|--------|
| Flammability | UL94V0 |
|--------------|--------|

STANDARDS

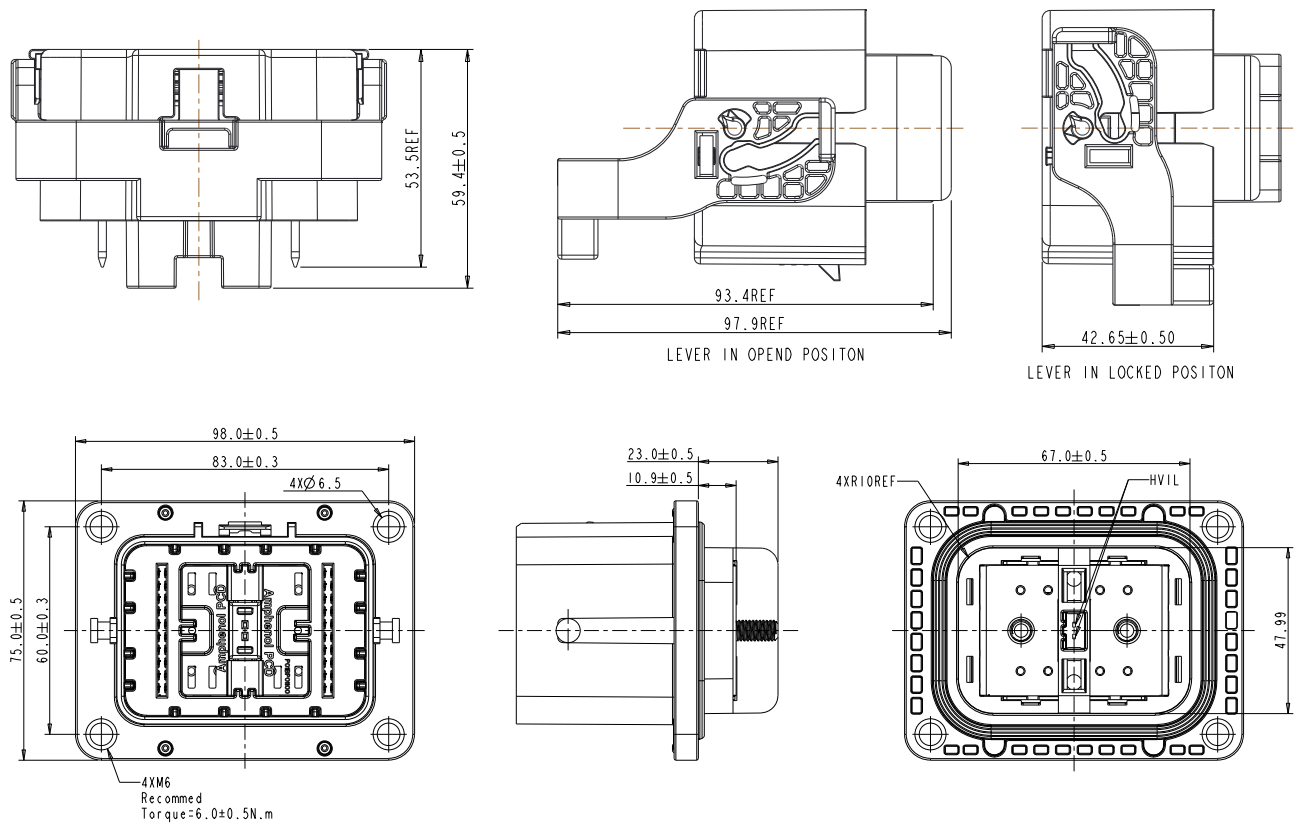
| |
|---------|
| USCAR-2 |
|---------|

| |
|----------|
| USCAR-37 |
|----------|

| |
|--------|
| LV-215 |
|--------|

| |
|------|
| RoHS |
|------|

PRODUCT DIMENSIONS



HOW TO ORDER - EXCEL|MATE MSDE

Plug

| | MSDE | XXX | X |
|---------------------------------------|------|-----|---|
| Fuse rating current: | | | |
| 500: Fused 500A | | | |
| 630: Fused 630A | | | |
| 000: Shunt (unfused) | | | |
| Fuse manufacturer: | | | |
| 0: Shunt (unfused) | | | |
| 1: Fuse from a different manufacturer | | | |
| 2: Fuse from a different manufacturer | | | |

Receptacle: Front Mounted Socket

| | MSDEF00 | F |
|-----------------------------|---------|---|
| Flange mounted type: | | |
| F: Front Mounting | | |

EXCEL|MATE MINI MSD V - TECHNICAL CHARACTERISTICS



KEY FEATURES

A two-stage lever provides an HVIL time delay

1 x integrated internal HVIL

Unique cooling structure

Dual-channel design lowers temperature rise

No tools required to unmate

Various fuse ratings

Receptacle can be front or rear mounted

APPLICATION

It is a tool-free solution for disconnecting the internal high voltage battery pack and protecting it from short circuit.

MECHANICAL

| | |
|---------------|-------------|
| Mating cycles | ≥ 50 cycles |
|---------------|-------------|

ELECTRICAL

| | |
|--------------------|------------|
| Fuse specification | up to 400A |
|--------------------|------------|

With fuse:

| | |
|---------------|---|
| Rated current | Current is approximately 1 / 3 the fuse rating (220A Max) |
|---------------|---|

| | |
|---------------|---------|
| Rated voltage | 750V DC |
|---------------|---------|

With shunt:

| | |
|---------------|----------|
| Rated current | 220A Max |
|---------------|----------|

| | |
|---------------|--------------|
| Rated voltage | 1500V DC Max |
|---------------|--------------|

ENVIRONMENTAL

| | |
|-------------------|----------------------|
| Protection degree | IP67, IP6K9K (mated) |
|-------------------|----------------------|

| | |
|---------------------|---------------|
| Ambient temperature | -40°C to 70°C |
|---------------------|---------------|

| | |
|---------------------|---------------|
| Storage temperature | -40°C to 85°C |
|---------------------|---------------|

| | |
|-----------------------|----------------|
| Operating temperature | -40°C to 125°C |
|-----------------------|----------------|

| | |
|--------------|--------|
| Flammability | UL94V0 |
|--------------|--------|

STANDARDS

| |
|---------|
| USCAR-2 |
|---------|

| |
|----------|
| USCAR-37 |
|----------|

| |
|--------|
| LV-215 |
|--------|

| |
|------|
| RoHS |
|------|

HOW TO ORDER - EXCELMATE MINI MSD V

Plug: With fuse

| | | | |
|---|----------|---|------|
| | MINI MSD | M | 2002 |
| Shell type: | | | |
| M: Plug | | | |
| Fuse rating current: | | | |
| 0802: 80A | | | |
| 1002: 100A | | | |
| 1252: 125A | | | |
| 1602: 160A | | | |
| 2002: 200A | | | |
| 2502: 250A | | | |
| 3152: 315A | | | |
| 3502: 350A | | | |
| 4002: 400A | | | |
| Fuse brand: | | | |
| Bussmann (by default), other brands, please contact us. | | | |

Plug: With shunt

| | | | |
|--|----------|----|-----|
| | MINI MSD | VM | 000 |
| Shell type: | | | |
| VM: Plug, shunt | | | |
| 000: No fuse needed, can directly use the terminal | | | |

Receptacle

| | | | | | |
|--|----------|---|---|-----|---|
| | MINI MSD | V | F | 000 | F |
| V: Built-in gasket seal, row connection | | | | | |
| V1: Built-in gasket seal, stud connection | | | | | |
| V2: Flat gasket seal, stud connection | | | | | |
| Shell type: | | | | | |
| F: Receptacle | | | | | |
| Fuse rating current: | | | | | |
| 000: No fuse needed, can directly use the terminal | | | | | |
| Flange mounted type: | | | | | |
| F: Front mounted | | | | | |
| R: Rear mounted (only available for V2) | | | | | |

V



V1



V2





EXCEL|MATE MINI MSD FUSE BOX - TECHNICAL CHARACTERISTICS

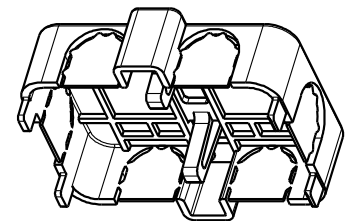
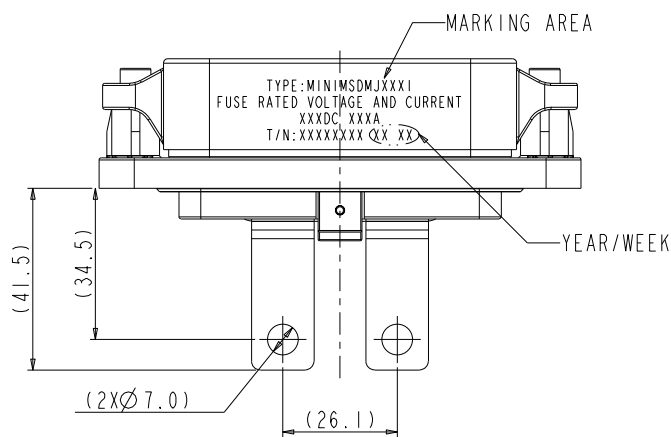
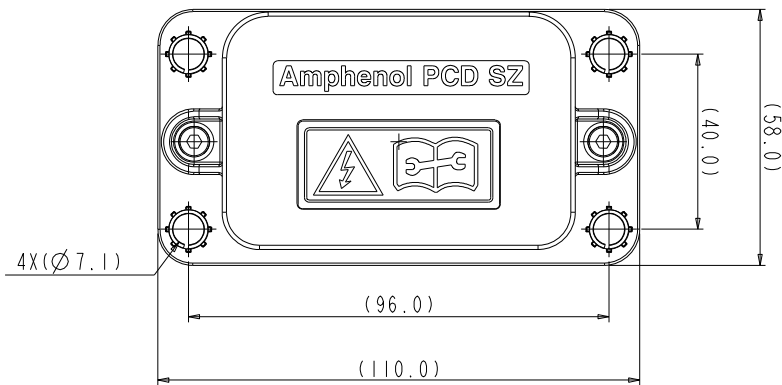


KEY FEATURES

Small in size
Removable housing

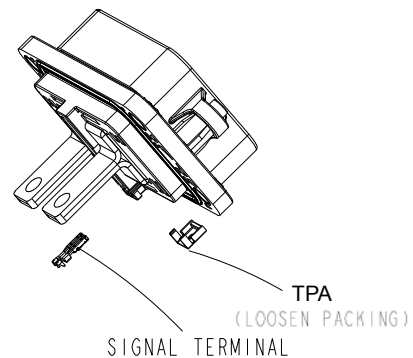
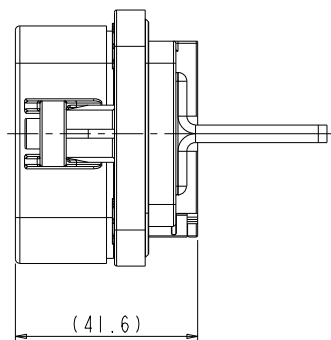
| DESCRIPTION | |
|---|-----------------|
| <ul style="list-style-type: none">• Small in size• Removable housing | |
| | |
| ELECTRICAL | |
| With fuse | |
|  Version T (plugged version): | |
| 80A to 315A | 700V DC |
| 350A & 400A | 600V DC |
| | |
|  Version J (screwed version): | |
| 80A to 350A | 750V DC |
| 400A | 700V DC |
| | |
| ENVIRONMENTAL | |
| Protection degree | IP67 |
| | |
| MATERIAL | |
| Plastic shell material | PA66+GF |
| Terminal Material | Copper Alloy |
| Seal ring material | Silicone rubber |
| | |

PRODUCT DIMENSIONS



P/N: C220006538

Protective cover for
MINI MSD T available
to purchase separately.



Signal Terminal (C310003614S) is available for purchase separately.

HOW TO ORDER - EXCELMATE MINI MSD



Version T (plugged version):

| MINI MSD T | | | 080 | 1 |
|-----------------------------|--|--|-----|---|
| Fuse rating current: | | | | |
| 080: 80A | | | | |
| 100: 100A | | | | |
| 125: 125A | | | | |
| 160: 160A | | | | |
| 200: 200A | | | | |
| 250: 250A | | | | |
| 315: 315A | | | | |
| 350: 350A | | | | |
| 400: 400A | | | | |
| 1: Bussmann | | | | |
| 2: Sinofuse | | | | |



Version J (screwed version):

| MINI MSD J | | | 080 | 4 |
|-----------------------------|--|--|-----|---|
| Fuse rating current: | | | | |
| 080: 80A | | | | |
| 100: 100A | | | | |
| 125: 125A | | | | |
| 160: 160A | | | | |
| 200: 200A | | | | |
| 250: 250A | | | | |
| 315: 315A | | | | |
| 350: 350A | | | | |
| 400: 400A | | | | |
| 4: Sinofuse | | | | |

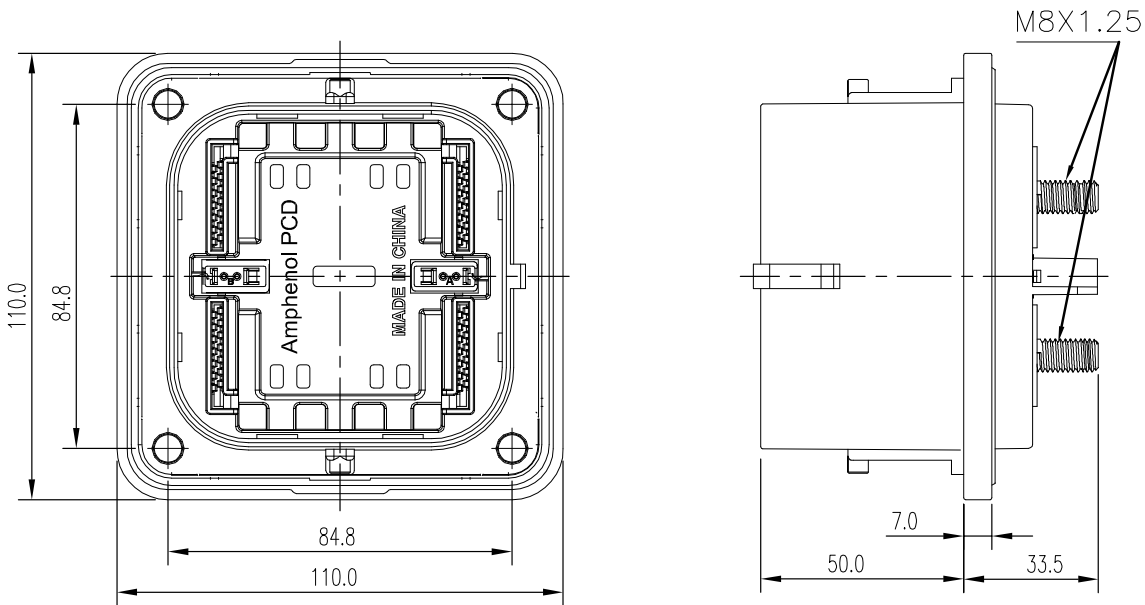
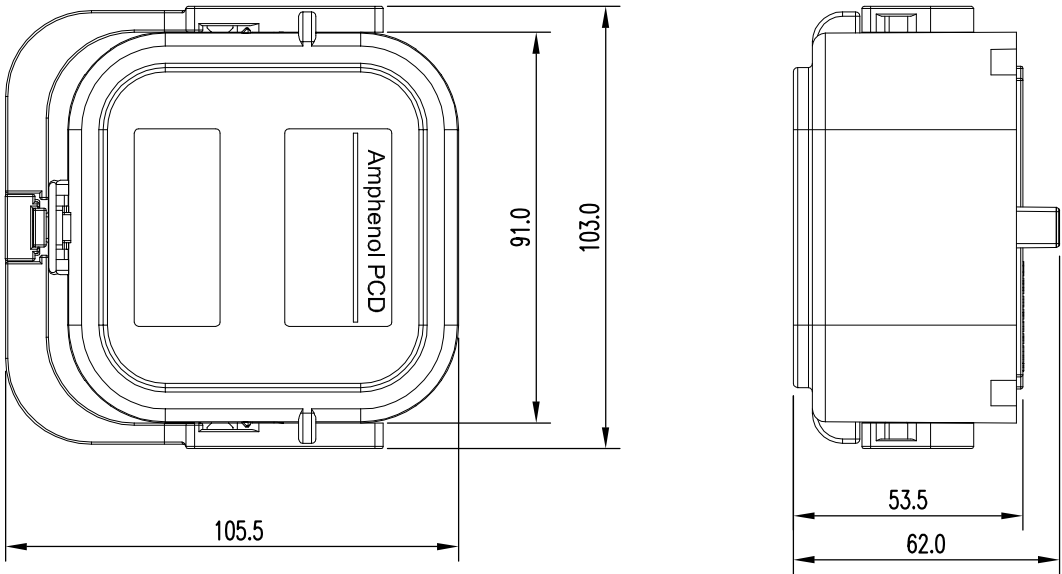


KEY FEATURES

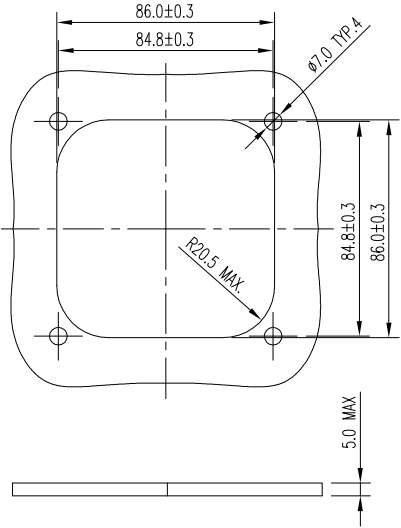
- A two-stage lever provides an HVIL time delay
- 2 x integrated internal HVIL
- Unique cooling structure
- Dual-channel design lowers temperature rise
- No tools required to unmate
- Various fuse ratings
- Receptacle can be front or rear mounted

| APPLICATION | |
|---|--|
| It is a tool-free solution for disconnecting the internal high voltage battery pack and protecting it from short circuit. | |
| MECHANICAL | |
| Mating cycles | ≥ 50 cycles |
| ELECTRICAL | |
| Fuse specification | up to 630A |
| With fuse: | |
| Rated current | Current is approximately 1/3 the fuse rating |
| Rated voltage | 500V DC to 600V DC |
| With shunt: | |
| Rated current | 260A Max @ Ambient 70°C |
| Rated voltage | 1000V DC Max |
| ENVIRONMENTAL | |
| Protection degree | IP67, IP6K9K (mated) |
| Ambient temperature | -40°C to 70°C |
| Storage temperature | -40°C to 85°C |
| Operating temperature | -40°C to 125°C |
| Flammability | UL94V0 |
| STANDARDS | |
| USCAR-2 | |
| USCAR-37 | |
| LV-215 | |
| RoHS | |

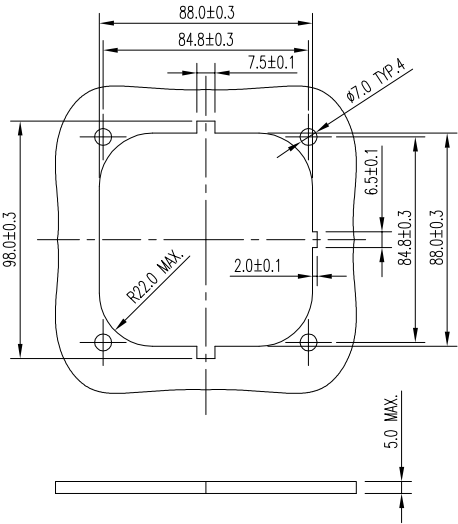
PRODUCT DIMENSIONS



FRONT MOUNTED



REAR MOUNTED



DUST CAP AVAILABLE
P/N: C270006810



Plug

| | | | | |
|---|-----|---|-----|---|
| | MSD | M | 200 | 1 |
| Shell type: M: Plug | | | | |
| Fuse rating current: 200: 200A 250: 250A 315: 315A 350: 350A 400: 400A 450: 450A 500: 500A 550: 550A 630: 630A 000: No fuse needed, can directly use the terminal | | | | |
| Fuse brand: 1: Ferraz 2: Bussmann | | | | |

Receptacle

| | | | | |
|--|-----|---|-----|---|
| | MSD | F | 000 | F |
| Shell type: F: Receptacle | | | | |
| Fuse rating current: 000: No fuse needed, can directly use the terminal | | | | |
| Flange mounted type: F: Front mounted R: Rear mounted | | | | |

EXCEL|MATE MSD V - TECHNICAL CHARACTERISTICS



MSD V is an upgraded version of the standard MSD.

It provides a rated voltage of 800V and a plug with integrated fuse. The other parameters remain unchanged.

KEY FEATURES

A two-stage lever provides an HVIL time delay

2 x integrated internal HVIL

Unique cooling structure

Dual-channel design lowers temperature rise

No tools required to unmate

Various fuse ratings

Receptacle can be front or rear mounted

APPLICATION

It is a tool-free solution for disconnecting the internal high voltage battery pack and protecting it from short circuit.

MECHANICAL

| | |
|---------------|-------------|
| Mating cycles | ≥ 50 cycles |
|---------------|-------------|

ELECTRICAL

| | |
|--------------------|------------|
| Fuse specification | up to 630A |
|--------------------|------------|

With fuse:

| | |
|---------------|--|
| Rated current | Current is approximately 1/3 the fuse rating |
|---------------|--|

| | |
|---------------|---------|
| Rated voltage | 800V DC |
|---------------|---------|

With shunt:

| | |
|---------------|-------------------------|
| Rated current | 260A Max @ Ambient 70°C |
|---------------|-------------------------|

| | |
|---------------|--------------|
| Rated voltage | 1000V DC Max |
|---------------|--------------|

ENVIRONMENTAL

| | |
|-------------------|----------------------|
| Protection degree | IP67, IP6K9K (mated) |
|-------------------|----------------------|

| | |
|---------------------|---------------|
| Ambient temperature | -40°C to 70°C |
|---------------------|---------------|

| | |
|---------------------|---------------|
| Storage temperature | -40°C to 85°C |
|---------------------|---------------|

| | |
|-----------------------|----------------|
| Operating temperature | -40°C to 125°C |
|-----------------------|----------------|

| | |
|--------------|--------|
| Flammability | UL94V0 |
|--------------|--------|

STANDARDS

USCAR-2

USCAR-37

LV-215

RoHS

Plug

| | | | |
|---|-------|---|-----|
| | MSD V | M | 200 |
| Shell type: M: Plug | | | |
| Fuse rating current: 200: 200A 250: 250A 315: 315A 350: 350A 400: 400A 450: 450A 500: 500A 550: 550A 630: 630A 000: No fuse needed, can directly use the terminal | | | |
| Fuse brand: Bussmann (by default), other brands, please contact us. | | | |

Receptacle

| | | | | | |
|--|-------|---|---|-----|---|
| | MSD V | 1 | F | 000 | F |
| Contact: 1: Improved contact conductivity | | | | | |
| Shell type: F: Receptacle | | | | | |
| Fuse rating current: 000: No fuse needed, can directly use the terminal | | | | | |
| Flange mounted type: F: Front mounted R: Rear mounted | | | | | |

EXCEL|MATE MSD XL - TECHNICAL CHARACTERISTICS

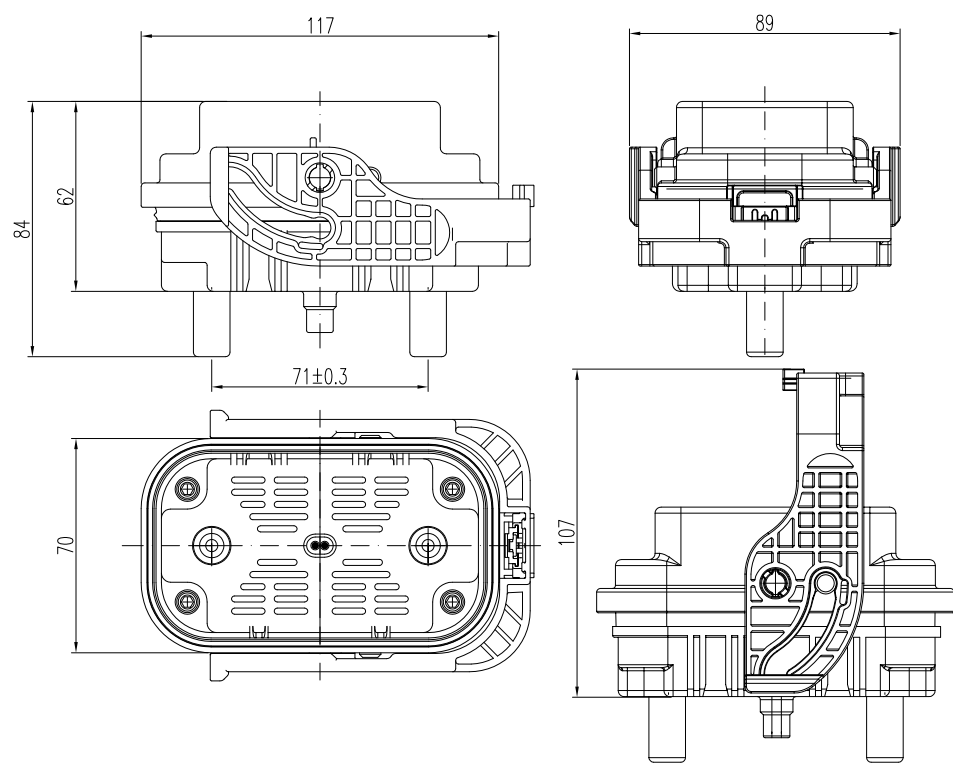


KEY FEATURES

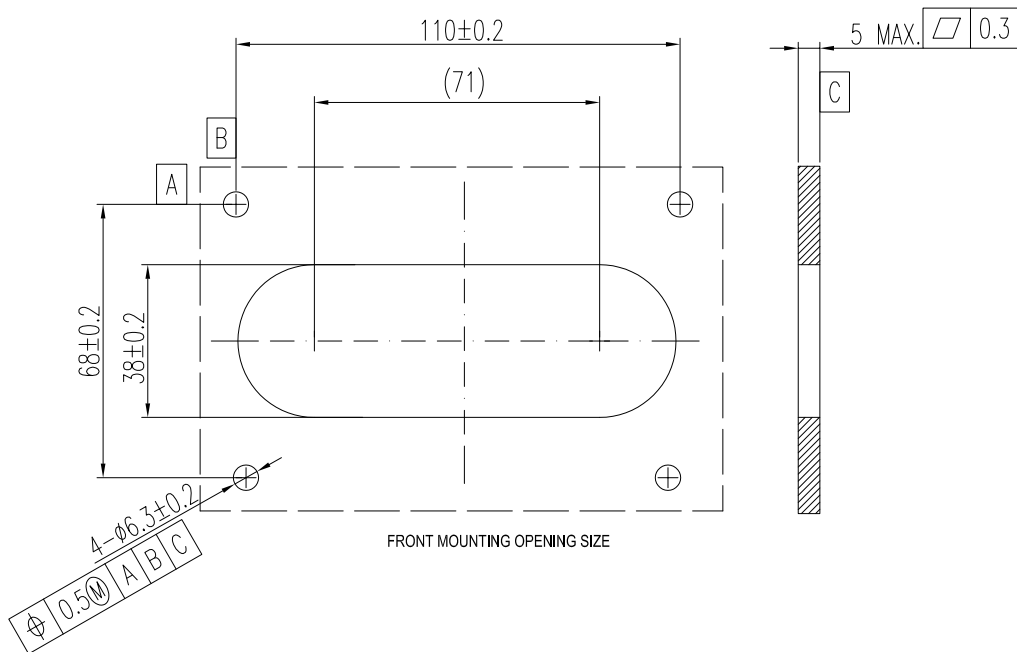
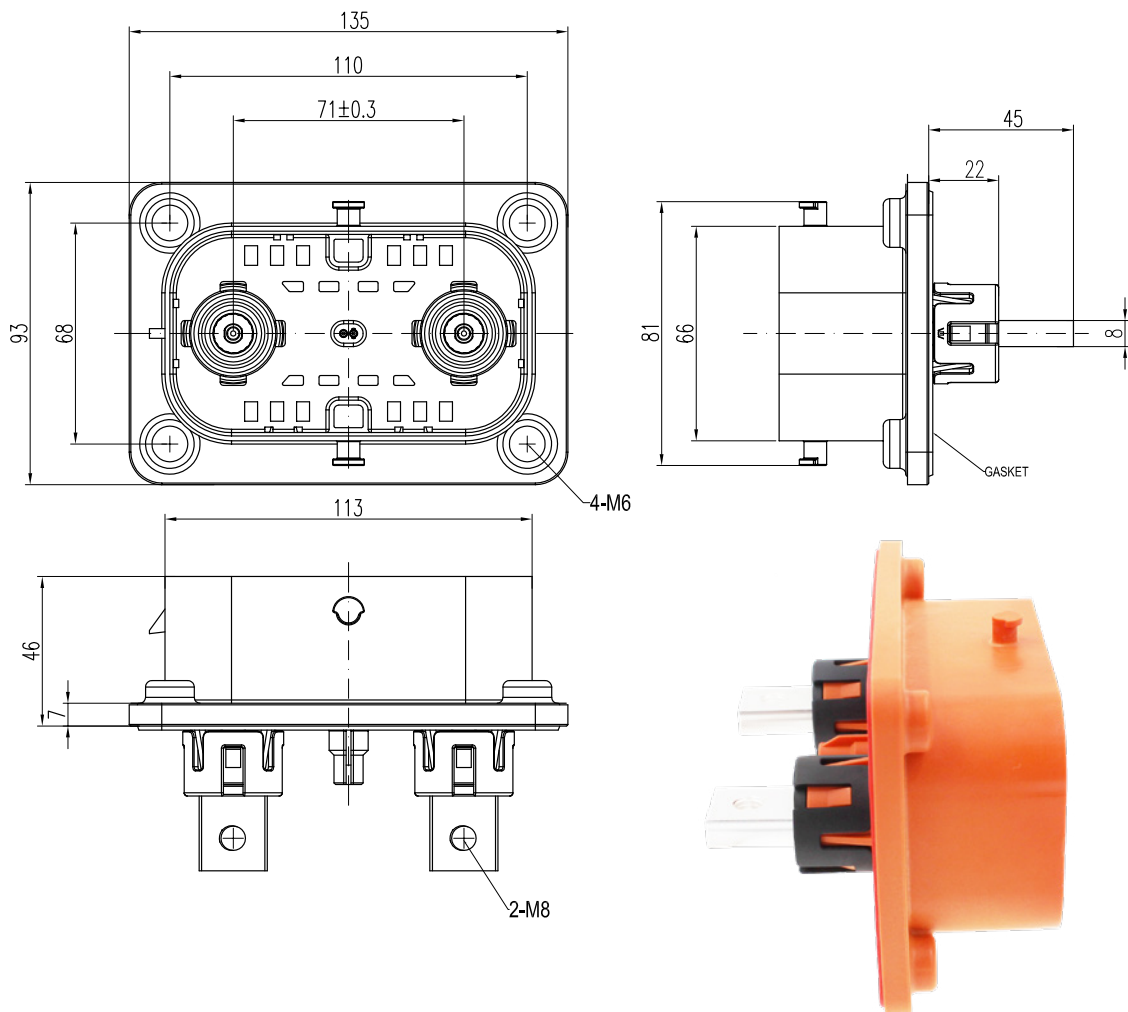
- 1 x integrated internal HVIL
- Unique cooling structure
- High current contacts with Amphenol Radsok technology
- No tools required to unmate
- Various fuse ratings
- Receptacle can be front or rear mounted

| APPLICATION | |
|---|----------------------|
| It is a tool-free solution for disconnecting the internal high voltage battery pack and protecting it from short circuit. | |
| MECHANICAL | |
| Mating cycles | ≥ 500 cycles |
| ELECTRICAL | |
| Fuse specification | up to 630A |
| With fuse: | |
| Rated current | 300A |
| Rated voltage | 1000V DC |
| With shunt: | |
| Rated current | 350A |
| Rated voltage | 1500V DC Max |
| ENVIRONMENTAL | |
| Protection degree | IP67, IP6K9K (mated) |
| Ambient temperature | -40°C to 70°C |
| Storage temperature | -40°C to 85°C |
| Operating temperature | -40°C to 125°C |
| Flammability | UL94V0 |
| STANDARDS | |
| USCAR-2 | |
| USCAR-37 | |
| LV-215 | |
| RoHS | |

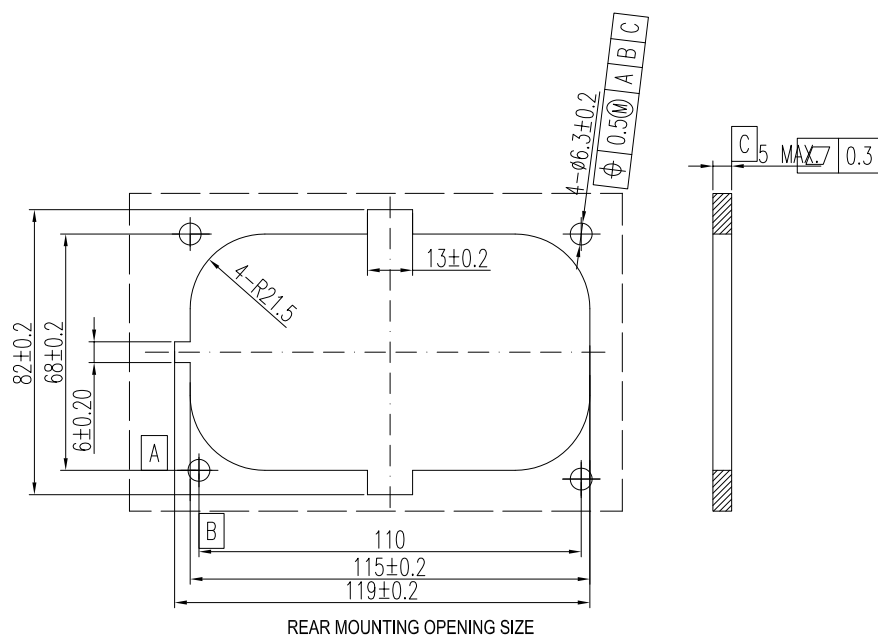
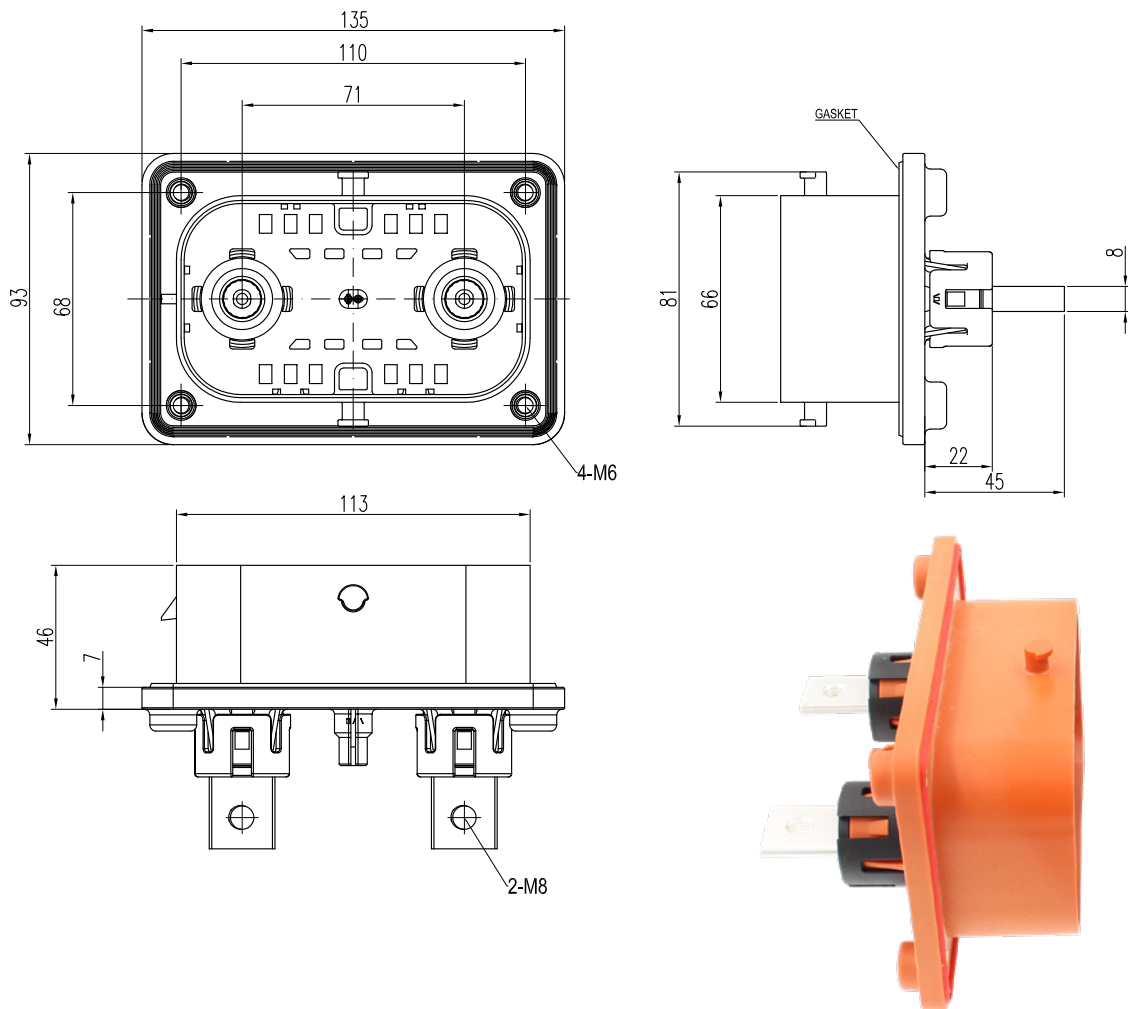
PRODUCT DIMENSIONS



FRONT MOUNTED



REAR MOUNTED



Plug

| MSD XL | M | 200 |
|--|---|-----|
| Shell type: | | |
| M: Plug | | |
| Fuse rating current: | | |
| 160: 160A | | |
| 200: 200A | | |
| 250: 250A | | |
| 315: 315A | | |
| 350: 350A | | |
| 400: 400A | | |
| 450: 450A | | |
| 500: 500A | | |
| 550: 550A | | |
| 630: 630A | | |
| 000: No fuse needed, can directly use the terminal | | |
| Fuse brand : | | |
| Bussmann (by default), other brands, please contact us. | | |

Receptacle

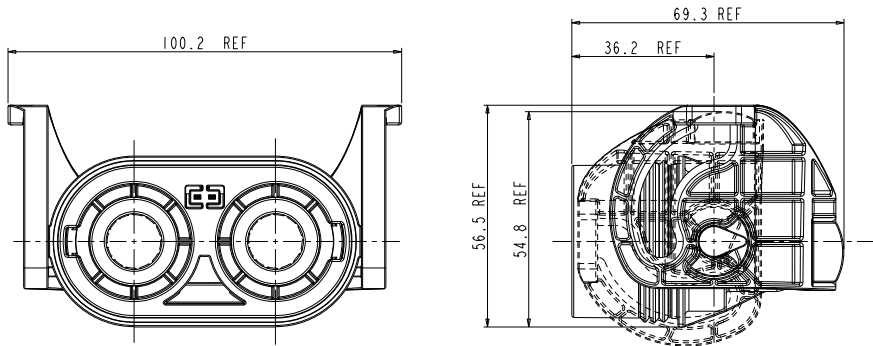
| MSD XL | F | 000 | F |
|---|---|-----|---|
| Shell type: | | | |
| F: Receptacle | | | |
| Fuse rating current: | | | |
| 000: No fuse needed, can directly use the terminal | | | |
| Flange mounted type: | | | |
| F: Front mounted | | | |
| R: Rear mounted | | | |

CHD SERIES - CHD14 2-PIN SHUNT

PLUG



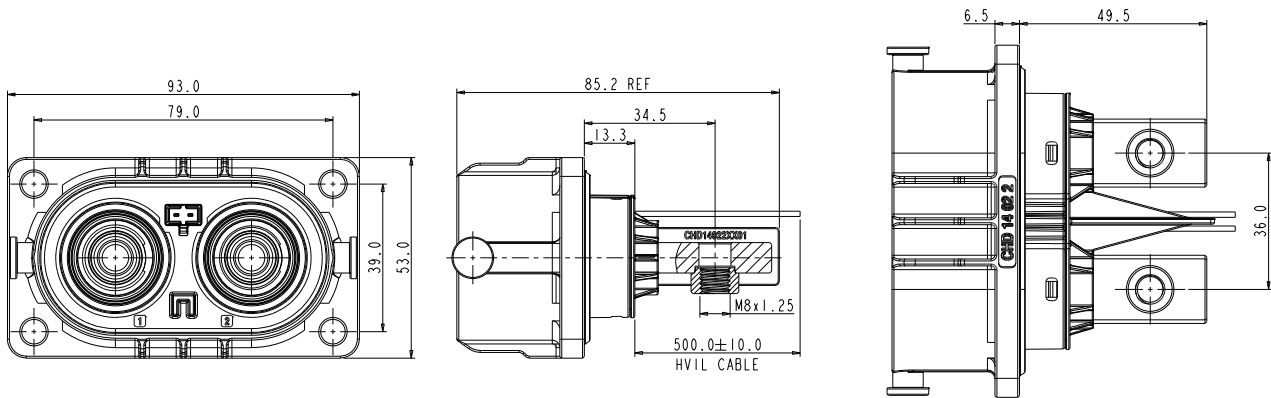
| | |
|----------------------|---|
| CHD 14 06 2 N 1 1 SC | ▶ with power terminal & with HVIL |
| CHD 14 06 2 N 0 0 SC | ▶ without power terminal & without HVIL |



RECEPTACLE



| | | | | | | |
|-----|----|----|---|-------------|-----------------|----|
| CHD | 14 | 02 | 2 | X | X | 01 |
| | | | | A: coding A | 0: without HVIL | |
| | | | | B: coding B | 1: with HVIL | |
| | | | | C: coding C | | |



Amphenol PCD Shenzhen

Building C
Dagang Industrial Zone
Guangming District
Shenzhen 518132
China

Tel.: +86 755-8173-8000

Email: inquiry@amphenolpcd.com.cn

www.amphenolpcd.com.cn



Notes:

Amphenol PCD Shenzhen has made every effort to ensure that the information contained in this catalog is accurate at the time of publication. Specifications or information stated in this publication are subject to change without notice.

Amphenol PCD Shenzhen reserves the right to clarify this catalog.