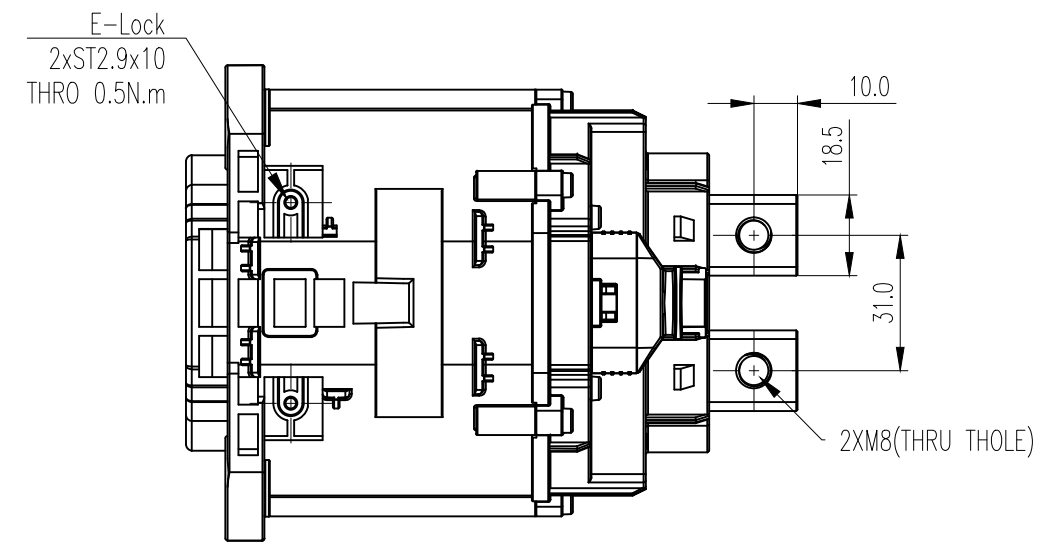
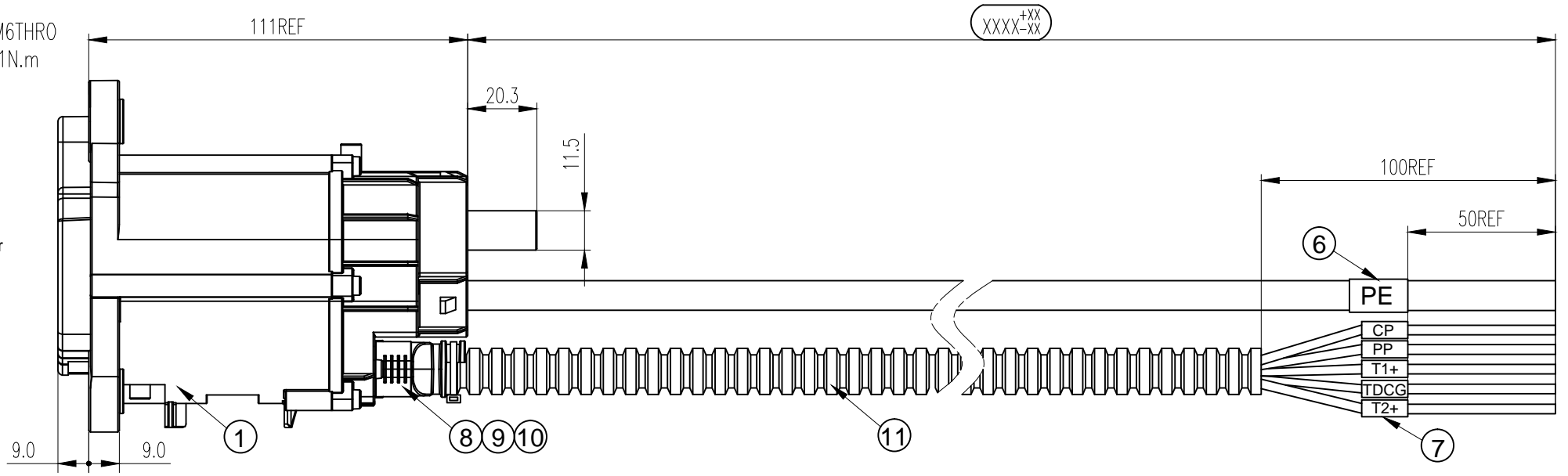
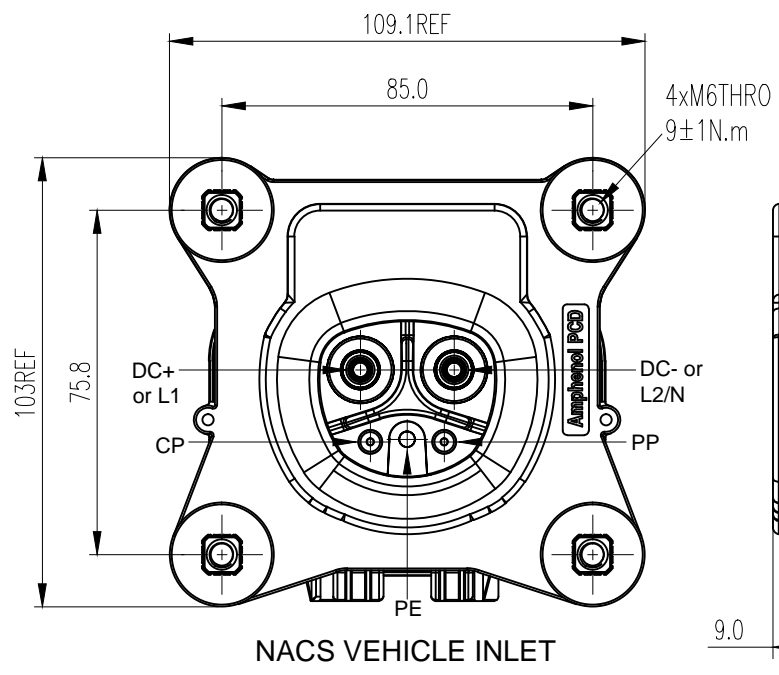


REV	ECN	DESCRIPTION	DATE	MODIFIED
1		RELEASE	Nov-01-2023	Jonny

Amphenol PCD  
ORIGINAL  
PDF Format  
R&D

受控文件  
2022年11月2日



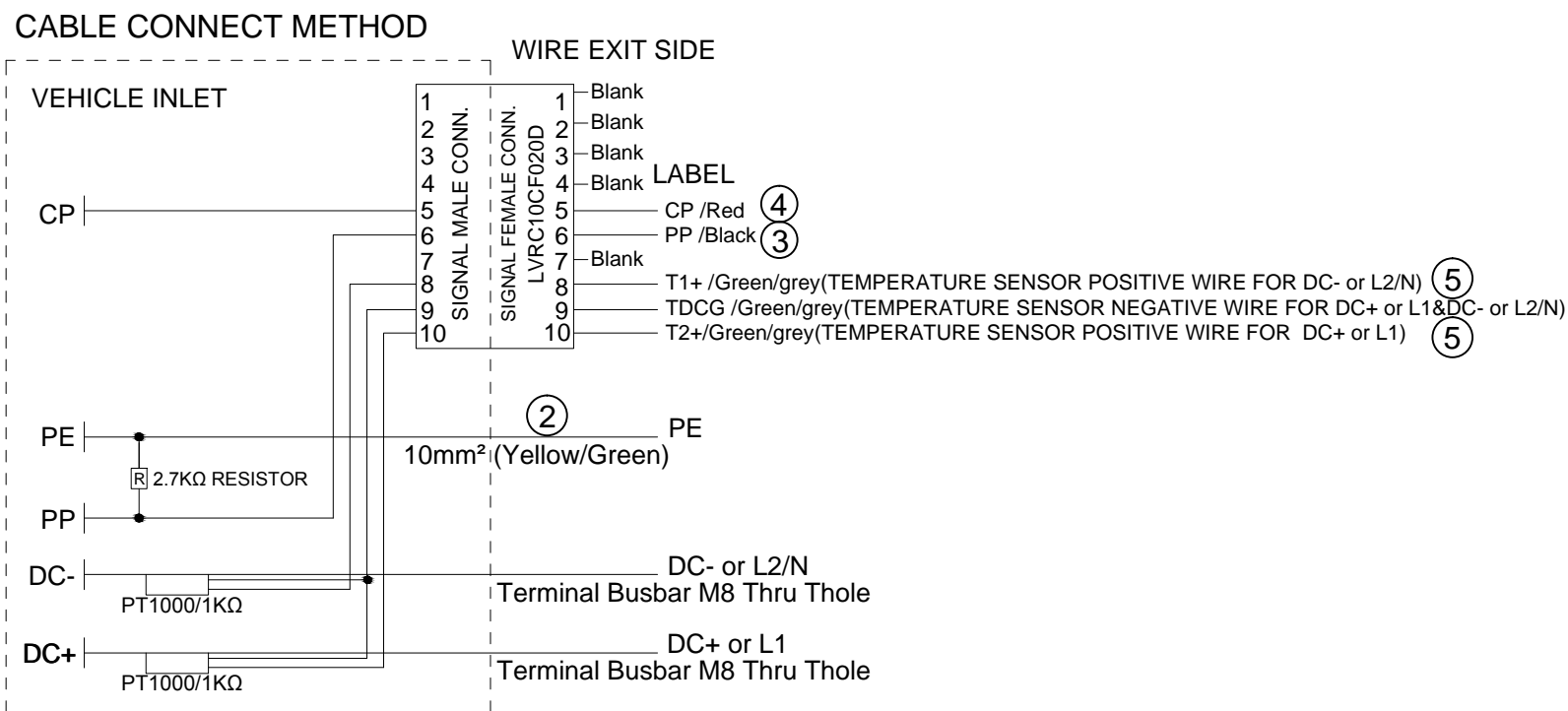
HVCONF0100S1L XXXX

LENGTH	TOLERANCE
0~1000mm	+25 -10
1001~5000mm	+40 -10
>5000mm	+50 -20

DIMENSIONS ANSI Y14.5M UNITS: MM CAD FILE	TOLERANCES .X ± 0.5 .XX ± 0.05 ANGLES ± 2.0°	PROJECTION 	Amphenol PCD Shenzhen			TITLE <b>NACS Vehicle Inlet Busbar Version Without LED DC1000V/600A Cable Assembly</b>		
			ENGR Jonny Nov-01-2023	CHKD <i>Rock.chen</i>	APPD <i>Ben</i>	SIZE <b>A3</b>	DWG NO. <b>C-HVCONF0100S1LXXXX</b>	REV <b>1</b>
ORIGINAL	THIS DOCUMENT CONTAINS PROPRIETARY INFORMATION WHICH IS THE CONFIDENTIAL PROPERTY OF Amphenol PCD Shenzhen Co. Ltd Amphenol PCD Shenzhen Co. Ltd RESERVES THE RIGHT TO CLARIFY THIS DRAWING			SCALE N/A	SHEET 1 OF 2			

C-HVCONF0100S1LXXXX

C-HVCONF0100S1LXXXX



**\*Notes:**

1.Cable Assembly Data:

✦ Rated Voltage&Rated Current:

DC:1000V DC, 600A Max; For DC liquid-cooled charging

PE: 10mm<sup>2</sup> Ground;

CS:30V DC 2A;

CP:30V DC 2A;

✦ Insulation Resistance:100MΩ Min(DC 1000V /DC+&DC-);

100MΩ Min(DC 500V /CP);

✦ Withstand Voltage:3000V/AC r.m.s(DC+&DC-);

500V/AC r.m.s(CP);

◎ Durability:10000 cycles(NACS PLUG);

✦ RoHS Compliance;

Ambient Temperature: -30°C to +50°C;

Insertion & Withdrawal Force: <100N

2.Connector Reference: C-HVCONF0100S1

3.Reference Standard: UL2251 ; SAE J3400

4.The cable should be fixed at 100mm max from the rear of connector

5.Cable Minimum Bending Radius:≥5OD

6.E-Lock to be ordered separately P/N: HVEL12NS001,Mounting torque is 0.5±0.025 N.m

⑪	P05Z000089	CONVOLUTED TUBING BLACK: 8.5*11.5mm	AR	m
⑩	C210003609	CABLE TIE BLACK	1	EA
⑨	P01BS00025	SIGNAL TERMINAL: P01BS00025 FOR 0.5-0.75mm <sup>2</sup>	5	EA
⑧	LVRC10CF020D	SIGNAL CONNECTOR: LVRC10CF020D 10POS	1	EA
⑦	C210006837	SINGLE-WALL H.S.T: Ø3.2mm WHITE	0.10	m
⑥	C210021008	SINGLE-WALL H.S.T: Ø8.0mm WHITE	0.05	m
⑤	P01BC00159	1C*0.75mm <sup>2</sup> UNSHIELDING, GREEN/GREY, XLPE, OD1.8±0.1	AR	m
④	P01BC00187	1C*0.75mm <sup>2</sup> UNSHIELDING, RED, XLPE, OD1.8±0.1	AR	m
③	P01BC00186	1C*0.75mm <sup>2</sup> UNSHIELDING, BLACK, XLPE, OD1.8±0.1	AR	m
②	P01BC00242	1C*10mm <sup>2</sup> UNSHIELDING, YELLOW/GREEN, XLPE, OD6.20±0.25	AR	m
①	HVCONF0100S1	NACS VEHICLE INLET: HVCONF0100S1, DC BUSBAR, 600A	1	EA
ITEM	P/N	DESCRIPTION	QTY	UNIT

SIZE	DWG NO.	REV
A3	C-HVCONF0100S1LXXXX	1
SCALE	N/A	SHEET 2 OF 2