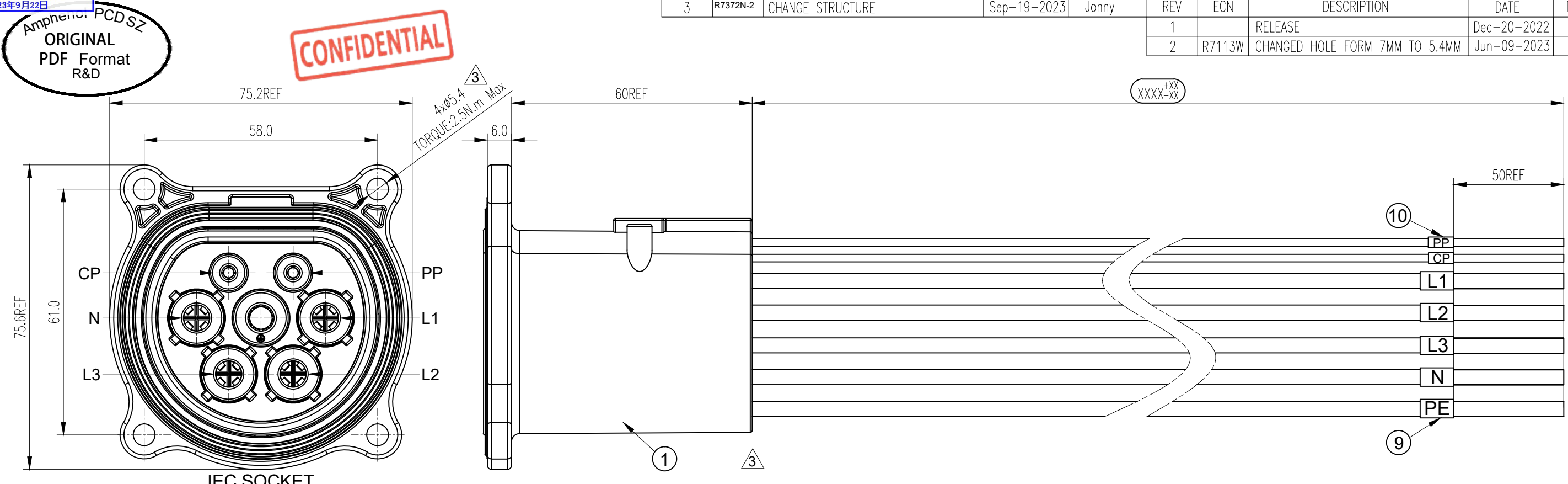


3	R7372N-2	CHANGE STRUCTURE	Sep-19-2023	Jonny	REV	ECN	DESCRIPTION	DATE	MODIFIED
					1		RELEASE	Dec-20-2022	
					2	R7113W	CHANGED HOLE FORM 7MM TO 5.4MM	Jun-09-2023	



CABLE CONNECT METHOD

6mm ² (Brown)	②	L1
6mm ² (Black)	③	L2
6mm ² (Gray)	④	L3
6mm ² (Blue)	⑤	N
6mm ² (Ye/Gn)	⑥	PE
0.5mm ² (Red)	⑦	PP
0.5mm ² (Black)	⑧	CP

- *Notes:**
- Cable assembly data:
 - Rated Voltage: 480V AC (L1&L2&L3&N&PE); 30V DC (CP&PP);
 - Rated Current: 32A (L1&L2&L3&N); 2A (CP&PP);
 - IP-Class: IP2X; IP55 (Mated)
 - Insulation Resistance: 100MΩ Min/500V DC
 - Withstand Voltage: 2000V r.m.s / L1&L2&L3&N&PE; 500V r.m.s / PP&CP
 - Durability: >10000 Cycles
 - RoHS Compliance
 - Ambient Temperature: -30°C ~ +50°C
 - Reference standard: IEC 62196-2; CE marking
 - Connector Reference: C-P02B000235
 - The cable should be fixed at 100mm max from the rear of connector
 - Cable Minimum Bending Radius: ≥5OD

HVCOSFS706L XXXX

LENGTH	TOLERANCE
0~1000mm	+25 -10
1001~5000mm	+40 -10
>5000mm	+50 -20

⑩	C210006837	H.S.T: Ø3.2 WHITE NOT MARKING	0.05	m
⑨	P05B000006	H.S.T: Ø6.0 WHITE NOT MARKING	0.10	m
⑧	C210030045	0.5mm ² UNSHIELDING BLACK OD=1.6±0.1	AR	m
⑦	C210030046	0.5mm ² UNSHIELDING RED OD=1.6±0.1	AR	m
⑥	C210030042	6mm ² UNSHIELDING YELLOW/GREEN, XLPE OD=5.1±0.2	AR	m
⑤	P01BC00200	6mm ² TINNED UNSHIELDING BLUE, XLPE OD=5.1±0.2	AR	m
④	P01BC00201	6mm ² TINNED UNSHIELDING GRAY, XLPE OD=5.1±0.2	AR	m
③	P01BC00202	6mm ² TINNED UNSHIELDING BLACK, XLPE OD=5.1±0.2	AR	m
②	P01BC00199	6mm ² TINNED UNSHIELDING BROWN, XLPE OD=5.1±0.2	AR	m
①	P02B000235	IEC SOCKET-OUTLET OF SHUTTER: P02B000235 BLACK	1	EA

DIMENSIONS	TOLERANCES	PROJECTION	Amphenol PCD Shenzhen		TITLE	
ANSI Y14.5M	.X ± 0.5		ENGR		IEC SOCKET OUTLET OF SHUTTER	
UNITS: MM	.XX ± 0.05		Jun-09-2023		32A 3P CABLE ASSEMBLY	
CAD FILE	ANGLES ± 2.0°		CHKD	SIZE	DWG NO.	REV
ORIGINAL	THIS DOCUMENT CONTAINS PROPRIETARY INFORMATION WHICH IS THE CONFIDENTIAL PROPERTY OF Amphenol PCD Shenzhen Co. Ltd. Amphenol PCD Shenzhen Co. Ltd RESERVES THE RIGHT TO CLARIFY THIS DRAWING		APPD	A3	C-HVCOSFS706LXXXX	3
			SCALE		SHEET	
			1:1		1 OF 1	

C-HVCOSFS706LXXXX