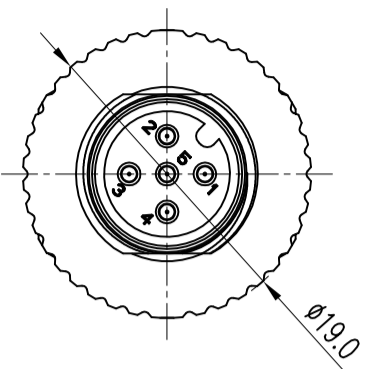
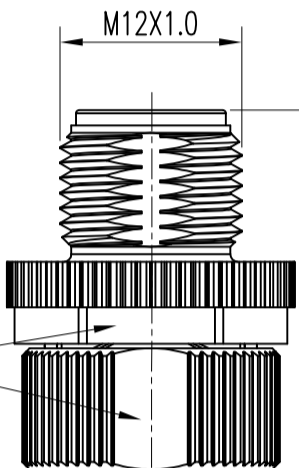


Amphenol PCD SZ
ORIGINAL
PDF Format
R&D

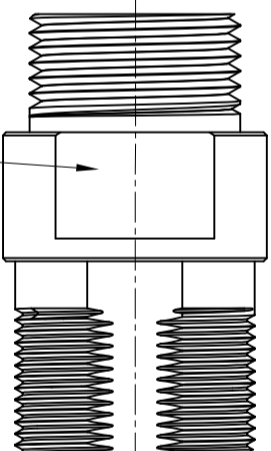
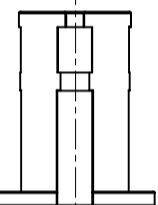
Complete length when assembled app, 55mm Ref.
产品组装后尺寸，55mm Ref.



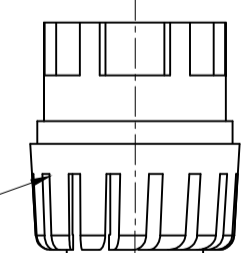
Contact face based on
IEC 61076-2-101



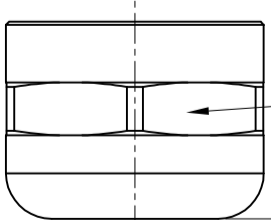
WIDTH ACROSS FLATS 16 mm



WIDTH ACROSS FLATS 16 mm

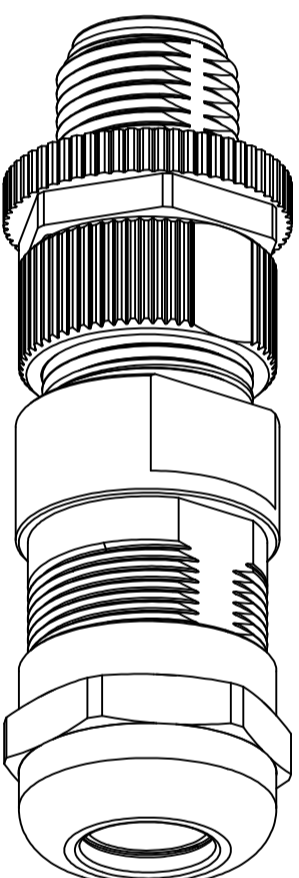


Clamping range, $\phi 4.5 \sim \phi 6.2 \text{MM}$



Clamping range, $\phi 6.3 \sim \phi 8.0 \text{MM}$

WIDTH ACROSS FLATS 17 mm



***Notes:**

Material \ Finish (材质/电镀)
Shells : Zinc alloy / Nickel Plating
外壳： 锌合金/镀镍
Insert : Plastic,Black, EN45545
胶芯： 塑料, 黑色 , EN45545
Contact : Copper Alloy / Gold Plated / Crimp Type(5X#20)
插针： 铜合金/镀金/压接式(5X#20)
Sealing : Rubber,Black,EN45545
密封环： 橡胶, 黑色, EN45545

Mechanical data (机械参数):
Operating Temperature(工作温度): -25°C ~ +85°C
IP-Class(防护等级): IP67
Durability(插拔次数): 100 cycles

Electrical data (电气参数) :
Rated Voltage(额定工作电压) : 110V DC at Pollution degree 2
Rated current (额定电流): 4.0A Max
Insulation Resistance(绝缘电阻): 100 M Ω Min
Contact Resistance(端子接触电阻): 3.0 m Ω Max
Product weight: 36g

Corresponding contact , need to be purchased separately

Cable ϕ	Part number	Cable spec.	AWG	Crimping tool
4.5~8.0	P01DM0074501	0.08~0.20mm ²	28~24	M22520/2-01
	P01DM0074502	0.13~0.32mm ²	26~22	
	P01DM0074503	0.20~0.52mm ²	24~20	

Amphenol Pcd Shenzhen

M12, MALE PLUG
A-Coded 5 Pole

DIMENSIONS	TOLERANCES	PROJECTION	CHKD	SIZE	DWG NO.	REV
ANSI Y14.5M UNITS: MM CAD FILE	X .XX ANGLES ± 0.5 ± 0.2 $\pm 0.5^\circ$		ENGR	A3	AS-M12-A05-M-PC-D-LC	1
ORIGINAL NOT FOR CUSTOMER DISTRIBUTION	THIS DOCUMENT CONTAINS PROPRIETARY INFORMATION WHICH IS THE CONFIDENTIAL PROPERTY OF AMPHENOL PCD SHENZHEN		APPD	CODE:	SCALE	SHEET
					2:1	1 OF 1